

THE WISCONSIN SOCIAL WORKER



NASW Wisconsin Chapter Newsletter

2011 LOBBY DAY A GREAT SUCCESS!

Over 330 social work practitioners and students from every region of Wisconsin participated in NASW WI's 2011 Lobby Day. For the first time ever, a group of students from the University of Wisconsin - Superior attended. They proudly wore bright yellow tee shirts with a picture of a pair of scissors on the front with a line through it (no cuts!) and stating on the back "Society is judged by how it treats its most vulnerable." There were also large student contingents from UW – Eau Claire, Viterbo University, UW – Whitewater, Carthage College, UW- Oshkosh, UW – Madison, Edgewood College and George Williams College. Approximately 20% of this year's attendees were practicing social workers from a wide range of agencies and organizations.



Lobby Day Participants at the Capitol

Lobby Day 2011 began with a dynamic presentation by YWCA of Dane County Chief Executive Officer Eileen Mershart. Ms. Mershart discussed some of the outrageous attacks on democracy in Wisconsin over the last several months as well as the devastating consequences the proposed budget cuts will have on the low income women whom she serves at the YWCA. Ms. Mershart also provided suggestions on how to approach the legislative visits.

Following Ms. Mershart's presentation, Lobby Day participants attended two additional training sessions. Lobby Day 2011 focused on six key topics of interest to the social work community:

- **The Wisconsin State Budget** presented by Jon Peacock from the Wisconsin Council on Children & Families
- **School Funding** presented by Tom Beebe, Executive Director of the Wisconsin Alliance for Excellent Schools
- **Child Victims Act** presented by Bill Berndt of the National Association Against the Sexual Exploitation of Children
- **Patient Abandonment Act** presented by Nicole Safar of Planned Parenthood of Wisconsin
- **Changing the Age of Mandatory Referral to Adult Court from 17 to 18 Years Old** presented by Sabrina Gentile from the Wisconsin Council on Children & Families
- **Student Loan Forgiveness for Social Workers** presented by Marc Herstand, the NASW WI Executive Director

In each session the attendees were given specific information about the issues involved and lobbying tips. Attendees received detailed fact sheets on all issues allowing them to learn about all the topics, not just those they attended training sessions for.

Continued on page 3

UPCOMING NASW-WI ONLINE ELECTION FOR BOARD OF DIRECTORS AND NLI ELECTIONS

Last year NASW WI changed to online voting for the Board of Directors and Nomination and Leadership Identification (NLI) elections. The following is a rough timeline for this year's election .

On or around May 6th you will receive an email stating that the election period will begin on May 16th.

On or around May 16th you should receive a postcard giving you the link to the ballot. It will also list your Branch and your member ID.

You will receive a reminder email on May 26th to remind you if you have not voted yet that you will have one more week to do so.

Continued on page 3

Contents

SW Section Discusses Collective Bargaining Resolution.....	3
2011 Annual Conf. Preview.....	5
Branch News and Events.....	6
A Day in the Life of an NASW WI Intern.....	7
NASW WI Legislative Digest.....	7
Lobby Day Photos.....	8 & 9
BSW/MSW Exam Prep.....	10
Clinical Network News.....	11
Social Workers in the News...	12

Wisconsin Chapter Board of Directors 2010 -2011

President: Roberta Hanus

roberta@uwm.edu (414) 332-1658

Vice President: Nick Smiar

smiarnp@uwec.edu (715) 833-0550

Treasurer: Matt Matilla

matt54311@new.rr.com (920) 465-1925

Secretary: Joe Dooley

dooleyjw77@gmail.com (608) 242.7007

Breanna Schell - BSW Student Rep.

bjschell@viterbo.edu (608) 385--9673

David Fischer - MSW Student Rep.

dmfischer@yahoo.com (608) 290-1461

Wendy Trefz - Racine/Kenosha Branch Chair

wtrefz@wi.rr.com (262) 537-4233

Bevelyn Johnson - Southeast Branch Chair

bevjohnson2003@yahoo.com, (414) 353-9250

Romona Powers - Southeast Branch Rep.

romonaanric@yahoo.com (262) 691-4588

Dawn Shelton-Williams - Southeast Branch Rep.

dawn.shelton-williams@aurora.org (414) 365-1514

Joseph Scribbins - South Central Branch Chair

scribbij@gmail.com (608) 647-6321

Katherine Drechsler - South Central Branch Rep.

kdrechsler@centurytel.net (608) 868-4412

Raelene Freitag - South Central Branch Rep.

rfreitag@mw.nccd-crc.org (608) 831-0556

Ellie Jarvie - Northeast Branch Chair

jarvie_ej@co.brown.wi.us (920) 438-8570

Marc Seidl - Northeast Branch Rep.

seidmc10@gmail.com (920) 255-3321

Anita Zibton - Southwest Branch Chair

amz1357@frontiernet.net (608) 634-3863

Dana Strohm - North Central Branch Chair

dana.strohm@gmail.com (414) 803-6372

Doreen Eldred - West Central Branch Chair

doreene@aspirus.org (715) 478-3786

NASW Wisconsin Chapter Staff

Marc Herstand, MSW, CISW: *Executive Director*

Contact: *marcherstand@tds.net*

Anne Courtney: *Administrative Coordinator*

NASW-WI Contact Information:

16 N. Carroll Street, Suite #220

Madison, WI 53703

(608) 257-6334: Office (8:00 to 4:30, M - F)

(866) 462-7994: Toll free in Wisconsin

(608) 257-8233: Fax

Email: *naswwi@tds.net*

Executive Director's Column

Marc Herstand, MSW, CISW



DIVERSITY OF OPINION WITHIN OUR PROFESSION

Although many members expressed their appreciation for NASW WI's strong support for the Wisconsin protests and in opposition to the budget repair bill, a few members disagreed. One member wrote that our stance would make her consider dropping her NASW membership.

At a recent speaking engagement at the University of Wisconsin, Madison School of Social Work where I discussed bills such as the Voter ID bill, conceal carry legislation and the proposed 2011-2013 state budget, one attendee asked me whether NASW WI would support a dialogue about diverse opinions within the profession. This attendee was a supporter of Governor Walker and the Voter ID bill, which NASW WI strongly opposes. I invited this attendee to facilitate such a networking session at our annual conference.

When the issue of NASW WI's legislative advocacy and political endorsements arise, I am sometimes asked how NASW WI makes a decision on these controversial issues. First we look for guidance from *Social Work Speaks*. *Social Work Speaks* is a booklet that includes NASW's official policy statements as passed by the NASW Delegate Assembly. The Delegate Assembly is an elected body from every NASW state chapter that meets every three years to determine the Association's policies, long term goals, Code of Ethics and selected bylaws. *Social Work Speaks* includes public and professional policy statements on 64 issues.

Although chapters are not required to actively promote all the position statements in *Social Work Speaks*, they are not allowed to take a public position in opposition to *Social Work Speaks*.

We also look for guidance from the NASW Code of Ethics. The Code of Ethics' value of Social Justice and its Ethical Principle of "Social workers challenge social injustice" provide some guidance for our policy decision. More specifically, Section Six of the NASW Code of Ethics, "Social Workers' Ethical Responsibilities to the Broader Society" provides a basis for many of our policy decisions. In a negative sense, periodically there are bills in the legislature that would violate provisions of the Code, including a bill that would allow health care professionals to neither serve nor make a referral for a client who requests a service the health care professional opposes for religious reasons.

At the Wisconsin Chapter the Board of Directors has delegated authority to the Legislative/Social Policy committee for decisions on legislative bills. However the board expects to be fully informed of decisions made by the LSP committee and could override these decisions.

In my 18 plus years with NASW WI there have been at least two bills that we did not take a position on because our membership was too split. One was the Physician Aid in Dying bill and the other was the Fifth Standard for Civil Commitment bill. In the case of the Physician Aid in Dying bill, we opted for presenting an annual conference panel giving both sides of the issue. For both of

these bills we printed position statements in our newsletter from both sides of this issue from members.

Aside from decisions on bills introduced into the Wisconsin Legislature, our Political Action Committee makes decisions on candidate endorsements that occasionally result in dissent from one or more of our members. The PAC bases its endorsement on a report card of votes by legislators on bills supported or opposed by NASW WI. They base their endorsement decisions for challengers on responses to a questionnaire we develop.

Of course NASW WI members are not required to personally support or endorse all the decisions made by our Legislative/Social Policy Committee or Political Action Committee. With 2100 members I would not expect to have 100% consensus on every policy position or political endorsement. I do welcome dialogue and would welcome feedback to this column or a "letter to the editor" on this topic for our newsletter. Although we do take positions on issues and candidates we need to be open to hearing the diverse opinions in our membership.

Despite our passion for the legislative and political activities, these activities are only a small part of our overall operations. As a membership association, we spend most of our time providing services to our members, including continuing education, information and referral on a wide variety of practice concerns, mentor contacts, job information, ethics consultation, monitoring governmental rules and policies affecting the profession and other items.

Lobby Day continued from front page

Over lunch Lobby Day attendees met with others in their state senate and assembly districts to plan a strategy for their afternoon legislative visits. Following lunch, participants made their way up to the Capitol Building. Despite enhanced security measures, everyone was able to get into the building in plenty of time for their first legislative meetings – and we were lucky enough to have a beautiful day for standing in line!

NASW WI thoroughly enjoyed organizing the 2011 Lobby Day, and we hope that those of you who attended found the experience to be informative and enjoyable. We look forward to seeing you all at Lobby Day 2013!

Online Elections continued from front page

The election period will end June 6th.

Here are a few things you can do to make our online elections as smooth as possible:

First of all, we cannot stress how important it will be to have an updated e-mail address and physical address for all of our members. Please take 5 minutes of your day to double check that your contact information in the national database is up to date and correct. Use the instructions at the end of this article if you need to update your information. This will save us time and money when sending out emails and postcards.

Add naswwi@tds.net to your email address book to reduce the chances of our emails being filtered out as spam.

We will be using www.surveymonkey.com to host all of our ballots. As there are many races, each ballot will have a statewide election section and a unique branch election section. Please continue reading for more information.

If you wish to have a ballot mailed to you, please call the office at 866-492-7994 (toll-free) or 608-257-6334 (Madison area) or email us at naswwi@tds.net and we will mail you a ballot. Please make your request as soon as possible to allow adequate time to receive your ballot and mail it back before the election deadline.

We were pleased by the enthusiastic response we received last year when we initiated our online election process. We hope this move will save trees, time, and money, and hopefully lead to higher voter turnout.

To Update (or Add) Your E-Mail Address

Go to www.socialworkers.org/membercenter
Enter your NASW username and password
Go to "Modify/Change Your Profile"
Click on "Your Personal Information" then "Edit"
Update your information and then click "Submit"

You may also call Customer Service at 800-742-4089. You can also use this system to change other personal information such as name or street address.

SOCIAL WORKERS SECTION DISCUSSES RESOLUTION TO SUPPORT THE RIGHT OF SOCIAL WORKERS TO COLLECTIVELY BARGAIN

Prompted by its public employee social worker member Eric Alvin, the Social Workers Section has discussed the possibility of passing a resolution supporting collective bargaining at its last two meetings. However despite Mr. Alvin's requests the Section has been unable to actually vote on the resolution because the item was listed on the agenda as "discussion only".

This topic was first discussed at the March 2nd Section meeting. Mr. Alvin's resolution was initially placed on the agenda, but was then removed. It was discussed under "Other Section Business". At that meeting NASW WI Executive Director Marc Herstand strongly supported unions for social workers based upon his experience helping NASW WI members who were protected by their union from termination when they advocated on behalf of their clients and/or for better working conditions.

At the April 13th Social Workers Section meeting, the Section heard from Department of Corrections social worker Kesha Marson who discussed how the union had helped with safety issues for inmates and staff, had supported critical in-service training needed by staff to better service clients, had helped with ethical issues and generally helped with providing better services to clients of color. In addition retired Madison school social worker Pat Mooney discussed how the union supported him in his efforts to provide services to homeless children. The Section also received letters from a number of social workers and NASW WI members supporting collective bargaining and unions for social workers including former NASW WI President Brenda Ward, clinical social worker Peg Audley and Dane County Human Services worker Joe Purcell.

In addition to writing the resolution, Eric Alvin submitted a three page, single spaced statement on why collective bargaining and unions are critical to consumer protection. If you would like copies of Mr. Alvin's statement or the proposed resolution, please contact Marc Herstand at marcherstand@tds.net

The Social Workers Section is scheduled to meet again on June 1st. At this meeting there will likely be another opportunity for public feedback on this issue. What is not clear is whether the Social Workers Section will actually be permitted to vote on Mr. Alvin's resolution.

If you would like to provide written input to the Social Workers Section on this issue, you can email it to Marc Herstand marcherstand@tds.net and he will forward it on to Section members. You can also contact Marc if you are thinking about attending the June 1st Social Workers Section meeting.

Branch and Committee Chairs 2010 - 2011

Committee Chairs

Clinical Network Chair

Ruth Ann Berkholtz, LCSW: RABerkholtz@tds.net

Committee on Ethics Chair

Stephanie Kissel: kissel@uwosh.edu

Continuing Education Committee Chair

Joan Groessl: groessl@charter.net

Diversity Task Force

Dawn Shelton Williams: dawn.shelton-williams@aurora.org

Pat Parker: parkerp@uwm.edu

Diversity Book Club Co-Chairs

Caroline Lenyard and Gail Johnson: naswwi@tds.net

Finance Committee Chair

Matt Mattila: Matt54311@new.rr.com

Human Resources Chair

Nick Smiar: smiarnp@uwec.edu

Legislative & Social Policy Co-Chair

Hope Swanson: purplecork@charter.net

Marketing Committee Chair

Vacant

Membership Committee Chair

Doreen Eldred: doreene@aspirus.org

NASW Task Force: SW Training Certificate Chair

Joe Dooley: dooleyjw77@gmail.com

Nomination & Leadership Identification Chair

Jennifer Burelbach: jennifer301@centurytel.net

Pride Caucus Chair

Joe Dooley: dooleyjw77@gmail.com

Professional Standards & Regulations Chairs

Jennifer Burelbach: jennifer301@centurytel.net

Task Force On Children's Issues

Karen Jick: kjick@sbcglobal.net

Raelene Freitag: rf Freitag@mw.nccd-crc.org

Wisconsin Social Workers PAC Chair

Sandy Bernier: sfbernier@charter.net

Branch Chairs

Wendy Trefz: Racine/Kenosha Branch Chair

wtrefz@wi.rr.com 262-658-8166 x29

Bevelyn Johnson - Southeast Branch Chair

bevjohnson2003@yahoo.com, 414-353-9250

Joseph Scribbins South Central Branch Chair

scribbij@gmail.com (608) 647-6321

Ellie Jarvie - Northeast Branch Chair

jarvie_ej@co.brown.wi.us (920) 438-8570

Anita Zibton - Southwest Branch Chair

amz1357@frontiernet.net (608) 634-3863

Dana Strohm - North Central Branch Chair

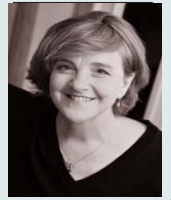
dana.strohm@gmail.com (414) 803-6372

Doreen Eldred - West Central Branch Chair

doreene@aspirus.org (715) 478-3786

President's Column

Roberta Hanus



Greetings NASW- Wisconsin members!

I've just returned from our nation's capitol where I was privileged to join other NASW presidents and EDs from around the country to advocate for the Social Work Reinvestment Act (SWRA). A point of clarification is in order: SWRA is NOT about loan forgiveness. While this significant initiative IS about bolstering the nation's need for future social workers, it's emphasis is on developing a Commission to focus on workforce trends, fair market compensation, translating research to practice, the lack of diversity within the profession, safety concerns and the implications for service delivery related to state level licensure across the nation. It is a piece of legislation that *advocates for everyone in the profession*, voicing our uniquely qualified reputation to address and ameliorate so many vulnerabilities in society.

As Marc and I met with legislative staff in six Wisconsin congressional offices, it was evident that some leaders (not all) were clueless as to what a social worker is or does. It seems that social work is some diffuse warm fuzzy term quite like 'environmentalism'.

Our professional image is vague and the breadth of our knowledge and skills are obscured by our varied titles and by the amazingly diverse list of clientele we serve. With this in mind, my intention for the remainder of my term as president of our chapter is to shed light on the many roles, workplaces, clientele and everyday perplexities in which our skills are performed. Your stories and expertise will be visible at our Annual conference in September and throughout the state in the year ahead.

While I realize that this issue is nothing new to most of you, I hope to share at least a bit of the inspiration that I gained from this Washington, D.C. trip. May it support you in whatever aspect of your career you are engaged.

- Each one of us has an opinion that deserves to be told. No matter your perspective on things, dialogue about the many different belief systems we have is essential to being a social worker.
- We must not be afraid to say what we truly believe, including our far-fetched dreams and visions for a different world. Today's political and social structures are simply an amalgam of past thoughts. The only way things will truly change is when we risk stepping outside the norm and standing for what we envision. Just imagine a society based on thoughtful dialogue.
- Live your passion to the fullest. As a social worker, take that step further and find a way to integrate that passion into your career. It could be families, photography, poetry, travel or music. Explore and share your larger Self.
- Find other social workers to speak to on a regular basis. Our profession has a unique way of seeing the world. Giving and receiving support from one another may be just the motivation you need to elevate your own and our profession's prominence and influence in the world.

I look forward to our retreat with NASW-WI Board members in late July. If you have specific goals or a particular vision you'd like to see addressed at this all-day meeting, please let me know directly. Have a great summer!

2011 Annual Conference Preview

NASW PRESIDENT-ELECT AND UNITED WAY CHIEF OPERATING OFFICER TO KEYNOTE NASW WI'S 2011 ANNUAL CONFERENCE

NASW's President-elect, Jeane Anastas, from New York City, and Leslie Ann Howard, United Way of Dane County's Chief Executive Officer will keynote NASW WI's 2011 annual conference.

Jeane W. Anastas, PhD, LMSW, is a professor at New York University's Silver School of Social Work. She received her BLS in social work from Boston University, her MSW from Boston College, and her PhD from Brandeis University.



Active in NASW since 1986, Anastas currently convenes ANSWER (The Action Network for Social Work Education and Research) works on the Height/Young Social Work Reinvestment Act, and the National Workforce Center Advisory Group. Past national leadership experience includes NASW's Finance Committee, the National Committee for Nominations & Leadership Identification, the National Committee on Women's Issues; the Institute for the Advancement of Social Work Research and

the Society for Social Work & Research boards; and chair of the Group for the Advancement of Doctoral Education. Past President of the Massachusetts Chapter, Anastas has been its Social Worker of the Year (1995). She has been a Council on Social Work Education (CSWE) visiting scholar (2006–2007), recipient of CSWE's Greatest Recent Contribution to Social Work Education award (2007), and was elected to the National Academies of Practice in Health Care in 2007.

Anastas publishes in the areas of women's issues, GLBT rights, mental health, and social work education.

Dr. Anastas will open the conference on Monday, September 12, 2011 at 9:00 A.M.

Leslie Ann Howard, MSSW, is president and chief professional officer of United Way of Dane County, a position she has held since 1989. She is the first woman to hold this position in the 85-year history of the organization. Ms. Howard joined United Way in 1981 as director of the Volunteer Center, and in 1982 became vice president of Planning, Fund Distribution and Agency Services. During her tenure as president, the organization has grown from an annual Campaign of \$5.5 million to over \$16 million.



A loyal native Pennsylvanian, Ms. Howard was born in Easton and attended Lafayette College there. She received her undergraduate degree in psychology in 1976 from Lafayette and went on to earn her master's degree in social work from the University of Wisconsin-Madison in 1979.

An advocate for collaboration and change in the health and human service delivery system,

Ms. Howard has spent a lifetime working and volunteering in the nonprofit sector. Her focus has included children; education; health; people with developmental disabilities; housing; neighborhood development; and diversity issues. Recently, Ms. Howard has spearheaded the Schools of Hope Initiative, which focuses on

closing the racial achievement gap in Madison's public schools and the Dane County Health Council, which is working to provide access to health care for Dane County's 32,000 uninsured residents.

Ms. Howard has served on many boards, including: Federal Home Loan Bank of Chicago, Madison Area Technical College, Community Action Coalition, The Nature Conservancy-Wisconsin Chapter, Madison Downtown Rotary, Eagle School and Friends of Wisconsin State Parks. She is currently serving on the Board of American Family Insurance Group and is a member of their Finance and Nominating & Governance Committees. She is a lecturer for the LaFollette School of Public Affairs at the University of Wisconsin-Madison where she teaches a graduate course in non-profit management. She has served as chair of the Lafayette College Class of 1976 fund drive, and is a member of Tempo, Vantage Point and the International Women's Forum. She also has coached girls and boys basketball teams.

Ms. Howard was recognized by the Madison Chapter of the American Marketer's Association as the 1990 "Marketer of the Year." She was featured in the Wisconsin State Journal's "Know Your Madisonian" in 1989, recognized as one of Madison's most influential individuals by Madison Magazine in 1992 and 1993, one of Dane County's top executives by Madison Magazine in 1994, was featured in Madison Magazine in 1999 as one of Madison's "Women on Top", and was a 2000 YWCA Woman of Distinction. In 2005, Ms. Howard was named to In Business "Executive Hall of Fame." Most recently, she was honored as part of Madison Magazine's "Best of Madison Business" 2008.

Ms. Howard will speak at the NASW WI annual conference on Tuesday September 12, 2011 at 9:00 A.M.

2011 ANNUAL CONFERENCE TOWN HALL MEETING TO FOCUS ON IMMIGRATION AND SOCIAL WORK PRACTICE

What is considered ethical social work practice with undocumented immigrants in Wisconsin? What is the focus of the immigration rights movement in Wisconsin today? How is immigration affecting communities throughout Wisconsin? These are some questions that will be addressed at NASW WI's 2011 "Town Hall Meeting", which will take place at the 2011 Annual Conference on Tuesday September 13, 2011 at the Sheraton Madison Hotel.

Confirmed speakers at this time include; Elena Lavarreda, a statewide organizer with Voces de la Frontera, Fabiola Hamdan, a Community Senior Social Worker with the Joining Forces for Families program at Dane County Human Services and Dr. Sandra Magana, an Associate Professor in the School of Social Work, University of Wisconsin, Madison.

NASW WI WEBSITE IS REDESIGNED

We have completely redesigned our website www.naswwi.org to make it more attractive and user friendly. New features include an Action Item in the upper left corner that focuses on current advocacy issues, job listings on the home page, a photo gallery with pictures of the recent NASW WI sponsored events, blogs from the Chapter President and Executive Director and a 'slideshow' feature that lets you see current events and workshops quickly and easily. This newsletter will be available on the website as will election information including candidate statements.

We welcome your input. If there are features you would like to see included on the website, please let us know.

Branch News and Events

NORTHEAST BRANCH CELEBRATES SOCIAL WORK MONTH

The Professional Programs in Social Work had a good turnout Wednesday (March 30) for a special gathering in their new digs in the newly remodeled Rose Hall. The occasion was twofold: to host a gathering of the Northeast Wisconsin chapter of the National Association of Social Workers, and in doing so, show off the UW-Green Bay program to members who are community practitioners; and to mark the presentation of the chapter's 2011 awards.

Highlighting the event was presentation of the Distinguished Social Worker of the Year Award to Alison Draheim, MSW, shown below. She



State Senator Dave Hansen accepts the Public Service Award from Northeast Branch Chair Matt Mattila

accepts the award from presenter Marc Seidl, BSW, a 2008 graduate of UW-Green Bay's program. Draheim, a social worker with the Green Bay school district, was recognized for her work with the growing problem of homelessness among K-12 students and their families and the attendant disruption of schooling for hundreds of young people. The citation said she "has positively impacted the lives of numerous students in Green Bay as well as those people who simply cross her path." Draheim is a past chair of the Brown County Homeless and Housing Coalition.



Allison Draheim accepts the Distinguished Social Worker Award from Marc Seidl, Northeast Branch Representative

Also honored was state Sen. Dave Hansen, recipient of the chapter's Distinguished Public Service Award. A

1971 UW-Green Bay graduate, Hansen was honored for his "long-standing history of support of human service programs and social justice issues in our state," and for being a key ally of NASW – Wisconsin in achieving the chapter's legislative priorities on behalf of vulnerable populations. The citation praised his leadership in his efforts to maintain funding for critical social and health programs that benefit the elderly, disabled, homeless, mentally ill and other vulnerable populations.

The Social Work program also recognized several agency field instructors who have served the UW-Green Bay program for 10 years or longer.

SOUTH CENTRAL BRANCH HONORS FOUR DEMOCRATIC STATE SENATORS FOR OPPOSITION TO BUDGET REPAIR BILL

"Extraordinary challenges require extraordinary responses". So said NASW WI Executive Director Marc Herstand, while presenting the South Central Branch's 2011 Public Service award to State Senators Mark Miller, Fred Risser, Jon Erpenbach and Steve Cullen on March 23, 2011 at the annual March is Social Work Month event.

In his remarks Herstand stated, "Because of the courageous actions of our 14 Democratic State Senators, including our four local senators, the Wisconsin public was made aware of the implications and repercussions of the budget repair bill and the budget bill and was able to mobilize. If not for the actions of the Feb 14, the budget repair bill would have passed in record time without 90-95% of Wisconsin citizens having an idea what was happening to their rights and to their state. If not for the actions of these 14 state senators, the massive protest movement would have never occurred and we would have no chance preventing the destruction of everything we love about our state.



State Senator Jon Erpenbach, NASW Executive Director Marc Herstand, and State Senators Mark Miller and Fred Risser

Herstand also discussed the state's outstanding public school system, the many innovative programs serving the poor, elderly, disabled, and mentally ill as well as the safety net for the poor, all of which are threatened by the budget repair bill and the proposed 2011-2013 budget.

In accepting the award State Senators Fred Risser, Jon Erpenbach and Mark Miller each thanked NASW WI for the support and discussed their experiences in Illinois and their concerns about the budget repair and overall budget bill. Senator Cullen was unable to attend the event.

In addition to the Public Service award, NASW WI's South Central Branch presented its Distinguished Social Workers award to Jack Kaufman, LCSW for a lifetime of achievement as an outstanding clinical social worker. The U W Madison School of Social Work presented its annual award to William Heiss for his work, among other things, in implementing the part-time MSW program.

The March is Social Work month event, held at the Pyle Center, University of Wisconsin Madison began with a rousing keynote address by former Department of Workforce Development Secretary Roberta Gassman, MSSW.

A DAY IN THE LIFE OF AN NASW WI INTERN By Laurel Schmidt

When Marc asked me to write a newsletter article about my experiences as an intern with NASW WI, I was taken aback – not by the request, but by the realization that my internship was nearly over; it had really snuck up on me.

It's really not surprising that my internship went so quickly – as you know, the past several months have been action-packed. When I first started at NASW WI, we were ramping up for the 2010 midterm elections. My first few weeks were a whirlwind of researching candidates and making seemingly endless election-related phone calls, not to mention preparing for and attending the 2010 annual conference.

Though the election results were not everything we had hoped for, I could nonetheless breathe a sigh of relief as the workload settled down. I now had the opportunity to learn more about what the normal functioning of NASW WI is like, temporarily uncomplicated by conferences and elections. I was able to attend various committee and coalition meetings, sit in on teleconferences and continuing education seminars, and work with Marc, Anne, and the other interns to devise new member services or improve those services that are already offered. Things never got old – especially when the protests around the Capitol began and getting into the NASW WI office involved working ones way through several hundreds or thousands of protestors. I had an endless series of protest chants stuck in my head for weeks. Every day was an adventure.

Even while occupied with these other responsibilities, there was always something lurking at the back of my mind, a dark realization of an insurmountable task yet to come – Lobby Day! When I first become an intern with NASW WI, I knew that the primary task shared by us interns would be to plan, organize, and facilitate the biennial lobby day (with, of course, substantial assistance from Marc and Anne). I knew the day was coming, but even as we attended Lobby Day Planning Committee meetings, discussed possible policies on which to focus, lined up speakers, toured the Masonic Center, and began sending out emails, letters and fliers in preparation for the event, lobby day seemed entirely unreal.

And yet, surprise, surprise, April 13th 2011 arrived in due course, and lobby day came and went. Like all major events, it had its share of frustrations and triumphs. Its successful completion was both a relief and an anticlimax – months worth of work culminating in eight short hours. However, taking into account both the ups and the downs, the struggles and the successes, I have to admit that working on lobby day was one of the single most valuable experiences of my student career. Not only did I gain extensive knowledge of state and local legislative bodies and can reel off the names of nearly every senator and representative and his or her respective district, but more importantly I discovered even more about myself – my skills, my capabilities, and my fears (and how to overcome them, despite my discomfort).

To any students looking for an internship – I would highly recommend interning with NASW WI. The work is varied, the people are great, and you will learn more about social work and about yourself than you would have thought possible.

JOB LISTING SERVICE AVAILABLE TO NASW WI MEMBERS

Following the 2010 Annual Conference, NASW WI's intern Laurel Schmidt started a job listing service for members. Any member who makes a request to be added to this job listserv will receive information on any job that gets emailed to us. If you are interested being added to the listserv, please contact us at naswwi@tds.net We encourage employers to send their job openings to us as well.

CURRENT NASW WI LEGISLATIVE EFFORTS

NASW WI Opposes Governor Walker's Proposed 2011-2013 State Budget

NASW WI has registered in opposition to Governor Walker's 2011-2013 state budget. NASW WI is concerned about the disproportionate impact of the budget on low and moderate income families. Governor's Walker's budget bill includes major cuts to; Medicaid, school aid, the Earned Income Tax Credit for low income wage earners, child care for low income wage earners, local transit, family planning services and support for W-2 families. The state budget was one of the 2011 Lobby Day priority issues

Voter ID bill

NASW WI submitted written testimony in opposition to the Voter ID bill (Senate bill 6 and Assembly Bill 7) which would require Wisconsin residents to produce a picture ID in order to vote. This bill could disenfranchise and/or create huge barriers to voting for students, elderly, poor and minority residents who don't have a Wisconsin driver's license. The bill, unlike previous bills, will not accept student photo ID's. For more information on this bill contact Marc Herstand at the NASW WI office toll-free at (866) 462-7994 or (608) 257-6334 or by email at naswwiintern@tds.net.

Conceal Carry Legislation

NASW WI and the Wisconsin Anti-Violence Education Effort (WAVE) have recently formed a statewide coalition to oppose and/or obtain training and exemptions to expected legislation that would allow Wisconsin residents to carry a concealed weapon. If you would like to help efforts to oppose conceal carry legislation, or if you would like to see an exemption so that a concealed weapon cannot be taken into your agency, please contact either Marc Herstand at the NASW WI office at marcherstand@tds.net or by phone at (608) 257-6334 or contact Heidi Rose or Jeri Bonavia at WAVE in Milwaukee at (414) 351-9283 or wave@WaveEdFund.org

NASW WI Organizes Coalition in Opposition to Bill Undermining Mental Health Parity

NASW WI is leading an effort to organize a coalition in opposition to a proposed bill by State Senator Leah Vukmir and State Representative John Nygren that would have the effect of eliminating almost all health insurance mandates under Wisconsin law including mental health parity, autism treatment, diabetes treatment, kidney disease treatment, breast reconstruction after a mastectomy, HIV/AIDS treatment and others. Under NASW WI's leadership, members of the New Day Coalition have been contacting agencies and association that focus on these and other health conditions and asking them to join efforts in opposition to this bill. If you would like to help, please contact me at marcherstand@tds.net.

NASW PUBLISHES NEW PRACTICE PERSPECTIVES

The national office of NASW has published the following new practice perspectives that are available to members:

- Domestic Violence and Women of Color: Complex Dynamics
- Advocating for Clinical Social Workers: Highlights of 2010
- Practice Perspectives: 2011 Medicare Changes for Clinical Social Workers

To obtain copies of these practice perspectives go to NASW's website at socialworkers.org

2011 Lobby Day Highlights



Volunteers Jenny Kasper & Cicely Robinson help register Lobby Day attendees



Attendees enjoy conversation and breakfast



UW Superior Students in their "No Cuts" tee shirts



Keynote Speaker Eileen Mershart



Lobby Day attendees at the keynote address



Eileen Mershart with the UW Superior Students



Jon Peacock Speaks on the WI State Budget



Rosalie Migas and Barbara Boustead



Sabrina Gentile speaks on the Change of Age of Referral to Adult Court from 17 to 18



Tom Beebe speaks on School Funding



Attendees at School Funding training



Severa Austin and a UW Madison student

2011 Lobby Day Highlights



Bill Berndt speaks on the Child Victims Act



Attendees at the Child Victims Act Training



Nicole Safer on the Patient Abandonment Act



Wendy Volz Daniels, Kathy Drechsler, Marc Herstand and NASW WI Intern Laurel Schmidt discuss strategy



Lunch at the Masonic Center



UW Eau Claire professor Jack Wagenknecht and students plan legislative visits



Lobby Day attendees walking to the Capitol



In front of the Capitol



UW Superior students in the Rotunda



Douglas Schechter, a constituent, talks to State Senator Fred Risser



State Senator Fred Risser responds



Rosalie Migas speaks to State Representative Brett Hulsey while others listen.

BSW & MSW Exam Preparation Workshops

May 27, 2011

July 8, 2011

BSW Exam Workshop
9:00 A.M. - Noon

MSW Exam Workshop
12:30 -4:30 P.M.

BSW Exam Workshop
9:00 A.M. - Noon

MSW Exam Workshop
12:30 - 4:30 P.M.

Workshop Content

- Review of social work content
- Test taking skills
- Hands-on practice exam:

All Sessions Held At

- Stowell Associates/SelectStaff Inc.
- 4485 N. Oakland Avenue, Shorewood, WI

The Presenter: Joanne Barndt ACSW, LCSW



Is a Clinical Associate Professor Emerita of the University of Wisconsin-Milwaukee Helen Bader School of Social Welfare. She has substantial experience in child welfare, clinical and medical social work. She is a past president of the Wisconsin Chapter of NASW

Please note that Oakland Avenue only offers 2 hour parking. If you go 1-2 blocks west you will find all day free parking on the street. A map link will be included with your confirmation email.

EACH WORKSHOP IS LIMITED TO 10 PEOPLE! PLEASE REGISTER NOW.

CHOOSE SESSION & DATE (Circle one) BSW - 5/27/11 MSW - 5/27/11 BSW - 7/8/11 MSW- 7/8/11

Name: _____ NASW Member? Yes Member # _____ No

Address: _____

City: _____ State: _____ Zip: _____

Phone #: _____ Email: _____

PAYMENT AMOUNT: NASW-WI Members \$55 NASW-WI Non-members 85.00

We accept checks and money orders payable to NASW WI, or Visa, MasterCard or Discover card.

Card Number: _____ / _____ / _____ / _____ Exp Date: ____/____ 3 Digit Code: ____

Registration Deadlines: The deadline for the May 28 workshops is May 20; the deadline for the July 8 deadline is July 1.

Cancellations and Refunds Policy

If you need to cancel your registration, refunds less a \$25.00 cancellation fee are available until seven days before the workshop date. After this date, no refunds will be processed. You may transfer your registration to attend this workshop at a different date without penalty provided you inform us at the naswwi@tds.net.

Please mail registration to NASW-WI, 16 N. Carroll Street, #220, Madison, WI 53703 or Fax to 608-257-8233 or register online at <http://www.naswwi.org>

Questions? Contact us at 608-257-6334 or Toll free in Wisconsin 866-462-7994 or email us at naswwi@tds.net.

Clinical Network News

Ruth Ann Berkholtz, MSSW, LCSW



REPORT ON VENDORSHIP LAW IMPLEMENTATION:

Managed Care/Insurance Corporations: I am pleased to report that all reports from across the state indicate no problems with reimbursement by managed care/insurance companies to LCSWs, working independently or in clinic settings, where HFS 35 clinic certification has been discontinued. So the vendorship law is alive and well. To date, the warnings that private insurers would require continued over-regulation of your practice have not been accurate. I am depending on all of you reading this to let me know what your experience has been.

ANOTHER STORY OF VENDORSHIP LAW IMPLEMENTATION:

Medical Assistance: As you know, our Professional Standards and Regulation Committee has been in dialogue for many months with DHS about the implementation of the vendorship law, specifically as it applies to Medicaid/Medical Assistance recipients. Only after the Medicaid portion of the law went into effect in January 2011, and clinics received claims denials, did NASW WI learn that billing procedures would have to be done differently in clinics that did not continue state clinic certification. **Please note that clinics which were previously called "state certified", under administrative rule DHS 35, are now referred to as "MA-certified" by the Department.** Here's what I have learned recently:

Use of NPI #s: If you are no longer MA-certified clinic (see above), you must now file claims under your individual NPI #, not your clinic NPI#, as you may have done in the past. So each licensed mental health professional must have an individual NPI# and be a Medicaid provider on record.

Here's a resulting problem: If you have a patient who is Medicare/Medicaid, you have to file Medicare under your clinic NPI#. Then, Medicare automatically sends the claim on to Medicaid, where it is denied because the individual NPI# is needed. Thus, these claims take much longer because the Explanation of Benefits has to be dealt with and claims re-filed to Medicaid. At my clinic, we attempted to file separately to Medicare and Medicaid but the automatic process apparently cannot be interrupted. This can require significant staff time.

Additional problem: If you file under your individual NPI#, you may receive reimbursement at only one billing address, even if you work at more than one site. This works fine if you are an independent practitioner, but is complicated if you work in more than one facility and each one has their own billing address. Essentially, you have to pick one place to receive MA payments.

You will not be surprised to learn that if you continue as a MA-certified clinic (DHS 35 certified) you will have the blessing of DHS to continue billing as you have in the past, at **as many locations as you want.**

Physician Prescription for Psychotherapy No Longer Needed

Some clinics and agencies providing mental health and substance abuse services have reported to NASW WI that MA claims have

been denied due to a lack of physician prescription. I do not have personal experience with this—have you?? Please let us know your experience.

I did attend a webinar last week called *Mental Health Coding is a Niche!* It certainly is. The 4th PowerPoint slide was entitled "Vendorship Amendment" and included statements clarifying that supervision for licensed mental health professionals and licensed psychologists, clinic certification (HFS 35) and physician prescription for psychotherapy were no longer needed for MA reimbursement since the new vendorship law. They went on to cite <http://www.naswwi.org>.

NASW NATIONAL ADVOCATES FOR LCSWs: DONNA ULTEIG, A WI LCSW IS ON THE SCENE!

Clinical social workers, along with other health professionals will soon be expected to use quality or outcome measurement tools. CMS, the Joint Commission and other accreditation and managed care organizations will eventually require their use. NASW is helping to develop integrative measures with other professionals and participates in the PCQI—Physician Consortium for Quality Improvement group. Our very own Donna Ulteig, LCSW from Madison, has been traveling to Washington DC to represent clinical social workers on the PCPI, Physicians Consortium for Performance Improvement, convened by the American Medical Society. The Medicare Improvements for Patients and Providers Act of 2008 requires that these measures be developed for use by LCSW in their daily practices. We will be asking Donna for regular updates on the progress of the consortium as well as their implications for practice. You may send your comments to: <http://www.ama-assn.org/ama/pub/physician-resources/clinical-practice-improvement/clinical-quality/physician-consortium-performance-improvement/public-comments.pag>

ANACRONYM QUIZ:

HITECH: Health Information Technology for Economic and Clinical Health (Act) - part of the 2009 American Recovery and Reinvestment Act

EHR: electronic health records

ONC: Office of the National Coordinator for health Information Technology (which will approve EHR software, among other functions).

ACOs: accountable care organizations, more sweetly termed Health Homes. These groups will have target \$\$ goals for delivering care to groups (as in 50,000 or more) Medicare enrollees. If they beat their goals—they are rewarded. I think it is called profit. The CMS estimates that ACOs will save Medicare over \$900,000 in the first 3 years.

(Thank you The Aware Advocate :April 2011, an online publication of the Clinical Social Work Association)

CEH OPPORTUNITIES:

The Rice Lake Round Table will meet on Wednesday evenings at Lehman's Supper Club in Rice Lake. Meetings will be held every other month on the third Wednesday of the month at 6:00PM. The scheduled dates are: May 18, July 20, September 20 and November 15. The March topic was boundaries, ethics and confidentiality

in a rural setting. These meetings are open to all licensed mental health professionals. Modest fees may be requested for CEH certificates.

Madison Area CEH

Thanks to Pam Phillips Olson, LCSW for her fascinating and provocative presentation on Trauma & Transcendence: Healing Through Creativity on April 29, 2011. Pam shared her clinical work using art production and appreciation to help clients of all ages tap into their creativity and promote their own trauma healing.

The next program will be held on September 23rd. Kathy Webster, LCSW in Madison will present on her work with children and their families involved in complicated divorce situations. As usual, the networking begins at 9:30 am and the program is from 10:00 am-noon. Location: South Madison Police Precinct at 425 Hughes Place, off 12/18 at Park St. behind the McDonalds.

NOTE: Our purpose is to offer no/low cost CEH's to LCSWs and others. However, in order to provide certificates of attendance, we will have to collect \$5/NASW members and \$10/non-members. Networking & snacks, as always, are complimentary.

CONTACT US:

Clinical news to share or receive? Send to dale@daledecker.net

Comments/info for this column? RABerkholtz@tds.net

SOCIAL WORKERS IN THE NEWS

Tom Arbogast, a licensed clinical social worker and lifelong peace activist died on April 6th. Tom worked as a clinical social worker primarily at the Tri-County Human Services Center in Reedsburg. Tom co-founded Wisconsin Network for Peace & Justice and founded the Sauk Prairie Peace Council. Tom was a member of NASW WI and helped organize an educational program on HIV/AIDS in the early 1990's for social workers, other professionals and community members in the Sauk Prairie region.

Fabiola Hamdan, a Community Senior Social Worker with the Joining Forces for Families program at Dane County Human Services will receive the YWCA 38th Annual Women of Distinction Award on May 26, 2011.

The Reverend Delia J. Zorzi, Administrator of St. Gabriel's Adult Day Center in Milwaukee, was featured in an article in NASW's Social Workers Help starts here website, in honor of 2011 Black History Month. Reverend Zorzi has a Bachelors of Social Work from Mt. Mary College and a Masters degree in Gerontology.

Following Governor Walker's presentation of his budget repair bill and his description of public employees as the "haves", **Wendy Volz-Daniels** wrote "Guest View" article printed in the *West Bend Daily News*. In this article Volz-Daniels described the work done by state employees and a history of furlough days, lack of salary increases including cost of living increases as well as the financial impact on state employees of the budget repair bill.

NASW WI North Central Branch Chair **Dana Strohm** was featured in the March 2011 edition of NASW News in the "Social Work in the Public Eye" section. Strohm is teaching a new class at the University of Wisconsin, Whitewater that aims to promote awareness of lesbian, gay, bisexual, transgender and queer/questioning individuals. Strohm said the course will help broaden the understanding of diversity in sexuality. The NASW News article quoted extensively from the *Royal Purple News*, the student newspaper at the University of Wisconsin at Whitewater.

Welcome to Our New Members! March - April 2011

Name	Date Joined
Rebecca Verville	04/28/2011
Ashley E. Birkholz	04/28/2011
Noelle Thomas	04/25/2011
Katie Fischer	04/25/2011
Sarah Ann Cormell	04/25/2011
Kim Herman, MSW, CSW, CSAC	04/21/2011
Jordan Noelle Mooney	04/21/2011
Alicia Zondag	04/19/2011
Madeline Prange	04/19/2011
Sarah J Levanduski	04/12/2011
Jennifer Colleen Wilcox	04/08/2011
Hillary LeAnn Kirking, BSW	04/05/2011
Patricia Runser	04/04/2011
Shannon M. Parker, BSW	03/30/2011
Ashley Volovsek	03/30/2011
Adam Matthias Hunt, CAPSW	03/29/2011
Nicole E Lairson	03/29/2011
Por Shoua Lee	03/29/2011
Christine Benoit Moore	03/29/2011
Diana Soltis-Friesner, LCSW, SAC	03/27/2011
Kelsey R Nottestad	03/26/2011
Niccol Martin, MSW, LCSW	03/23/2011
Henry Soule Bothfeld	03/23/2011
William Joseph Geving	03/23/2011
Julie Anne Offutt, LCSW, CSAC	03/22/2011
Julie Incitti	03/22/2011
Stephanie Mock, MSW	03/21/2011
Michael Patrick O'Brien Witzke	03/21/2011
Shannon M Kroenke	03/21/2011
Maria Pawlik	03/21/2011
Emilie Anne Pinkovitz	03/19/2011
Kristine Ann Scanlan	03/19/2011
Polly Ann Dusek, LSW	03/18/2011
Sara Louise MacDonald, MSW	03/14/2011
Jennifer Coleman	03/12/2011
Brita Jean Rekve, LCSW	03/12/2011
Tiffany Caprice Ford	03/11/2011
Susan K McDonald	03/11/2011
Tanya L. Lofdahl	03/11/2011
James Roger Brown	03/11/2011
Christina Marie Landreman	03/08/2011
Angi D Krueger	03/08/2011
Wade T Koski, LCSW	03/07/2011
Susanne Wilczek	03/06/2011
Michelle L. Doneis	03/04/2011
Lauren Zanotti	03/04/2011
Sara M Schaller	03/03/2011
Jessica Schmidt	03/03/2011
Kila Renee Carrier	03/02/2011
Jamie Stronach, APSW	03/02/2011



Calendar of Events



May 2011

NASW WI Online Elections Begin

When: May 16, 2011

Where: Survey Monkey or by requested paper ballot

For Candidate Information visit our website www.naswwi.org

For more information call NASW WI toll-free at 866-462-7994 or 608-257-6334

BSW and MSW Exam Preparation Workshops

When: May 28, 2011,

BSW - 9:00 a.m. to 12:00 noon; MSW - 12:30 - 4:30 p.m.

Where: Stowell Associates/Select Staff; 4485 N. Oakland Ave.; Shorewood, WI 53211

For more information or to register online visit our website

www.naswwi.org or call NASW WI toll-free at 866-462-7994 or 608-257-6334

June 2011

Social Workers Section

When: June 1, 2011, 9:00 A.M.

Where: Department of Regulation & Licensing, 1400 E.

Washington Ave., Madison

For more information call 608-266-2112 or go to <http://drl.wi.us>

NASW WI Online Elections End

When: June 6, 2011

Where: Survey Monkey or by requested paper ballot. Paper

ballots must be postmarked by this date. For Candidate

Information visit our website www.naswwi.org

For more information call NASW WI toll-free at 866-462-7994 or 608-257-6334

NASW WI Continuing Education Committee

When: June 13, 2011, 12:00 noon

Where: NASW WI office, and by toll-free conference call

For more information call NASW WI toll-free at 866-462-7994 or 608-257-6334

NASW WI Legislative/Social Policy Committee

When: June 13, 2011 5:00 P.M.

Where: NASW WI office, and by toll-free conference call

For more information call NASW WI toll-free at 866-462-7994 or 608-257-6334

NASW WI Professional Standards & Regulation Committee

When: June 20, 2011, 12:00 noon

Where: NASW WI office, and by toll-free conference call

For more information call NASW WI toll-free at 866-462-7994 or 608-257-6334

July 2011

NASW WI Continuing Education Committee

When: July 11, 2011, 12:00 noon

Where: NASW WI office, and by toll-free conference call

For more information call NASW WI toll-free at 866-462-7994 or 608-257-6334

NASW WI Legislative/Social Policy Committee

When: July 11, 2011 5:00 P.M.

Where: NASW WI office, and by toll-free conference call

For more information call NASW WI toll-free at 866-462-7994 or 608-257-6334

NASW WI Professional Standards & Regulation Committee

When: July 18, 2011, 12:00 noon

Where: NASW WI office, and by toll-free conference call

For more information call NASW WI toll-free at 866-462-7994 or 608-257-6334

Examining Board of Marriage & Family Therapists, Professional Counselors and Social Workers

When: Tuesday, July 26, 2011, 9:00 A.M.

Where: Department of Regulation & Licensing, 1400 E. Washington Ave., Madison

For more information call 608-266-2112 or go to www.drl.wi.gov

Social Workers Section

When: July 27, 2011, 9:00 A.M.

Where: Department of Regulation & Licensing, 1400 E. Washington Ave., Madison

For more information call 608-266-2112 or go to www.drl.wi.gov

NASW WI Board of Directors Training, Meeting and Retreat

When: July 29 & 30, 2011

Where: NASW WI office and TBD

For more information call NASW WI toll-free at 866-462-7994 or 608-257-6334

August 2011

NASW Delegate Assembly

When: August 5 & 6, 2011

Where: Wisconsin Delegation meets at the Helen Bader School of Social Welfare

For more information call NASW WI toll-free at 866-462-7994 or 608-257-6334

NASW WI Continuing Education Committee

When: August 8, 2011, 12:00 noon

Where: NASW WI office, and by toll-free conference call

For more information call NASW WI toll-free at 866-462-7994 or 608-257-6334

NASW WI Legislative/Social Policy Committee

When: August 8, 2011 5:00 P.M.

Where: NASW WI office, and by toll-free conference call

For more information call NASW WI toll-free at 866-462-7994 or 608-257-6334

NASW WI Professional Standards & Regulation Committee

When: August 15, 2011, 12:00 noon

Where: NASW WI office, and by toll-free conference call

For more information call NASW WI toll-free at 866-462-7994 or 608-257-6334

September 2011

NASW Annual Conference

When: September 12 -14, 2011

Where: Sheraton Madison Hotel, 706 John Nolen Drive, Madison

For more information call NASW WI toll-free at 866-462-7994 or 608-257-6334